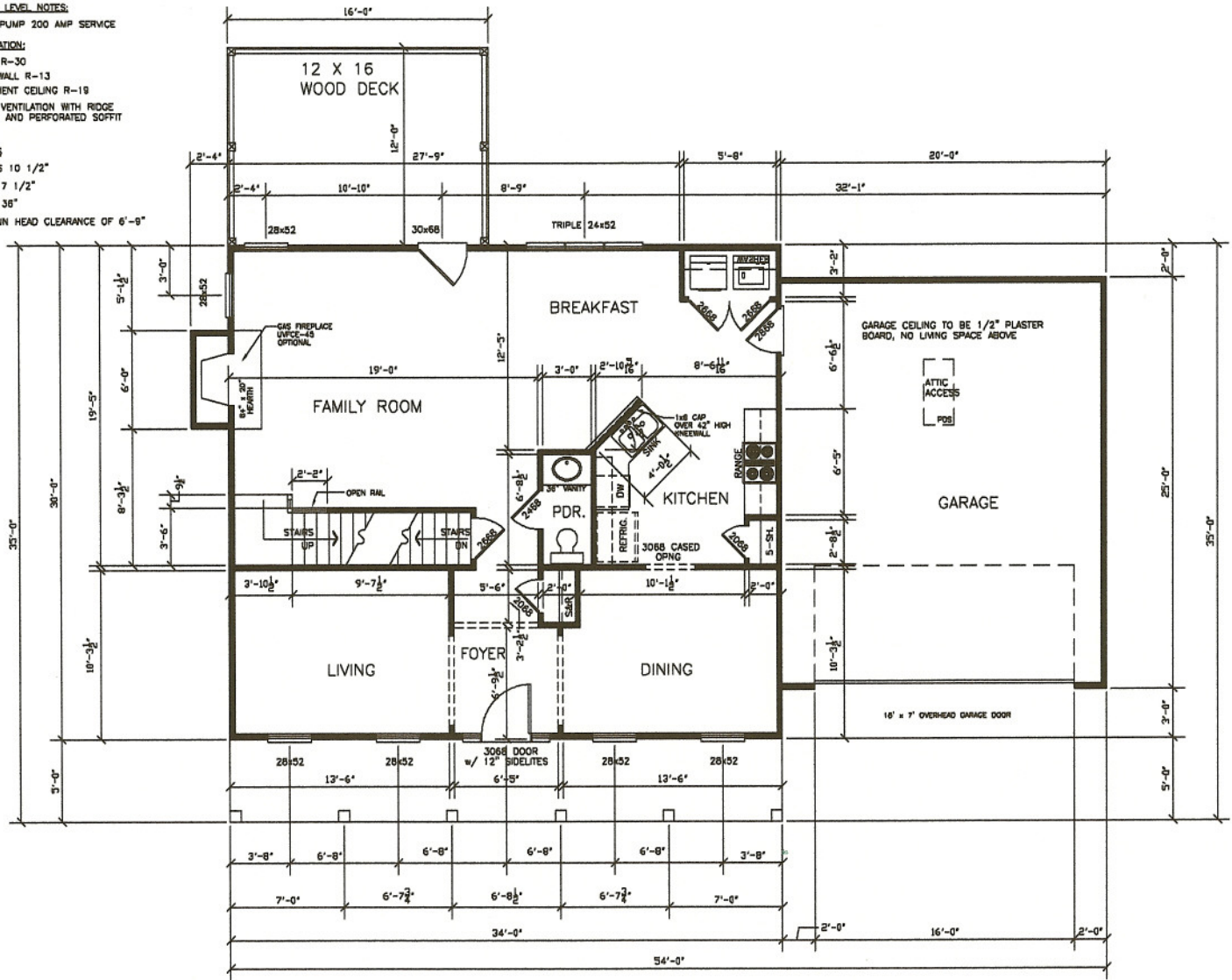


LIVING LEVEL NOTES:
 HEAT PUMP 200 AMP SERVICE
INSULATION:
 ATTIC R-30
 EXT. WALL R-13
 BASEMENT CEILING R-19
 ATTIC VENTILATION WITH RIDGE
 VENTS AND PERFORATED SOFFIT
 VENT
STAIRS
 TREADS 10 1/2"
 RISER 7 1/2"
 WIDTH 36"
 MAINTAIN HEAD CLEARANCE OF 6'-8"



FIRST FLOOR PLAN

HOUSE HEIGHT:
 BASEMENT:
 FIRST FLOOR:
 SECOND FLOOR:



DESIGNED BY
 FRANK BETZ ASSOCIATES, INC.
 1800 LAKE PARK DRIVE/SUITE 101
 SMYRNA, GEORGIA 30080
 404/431-0888

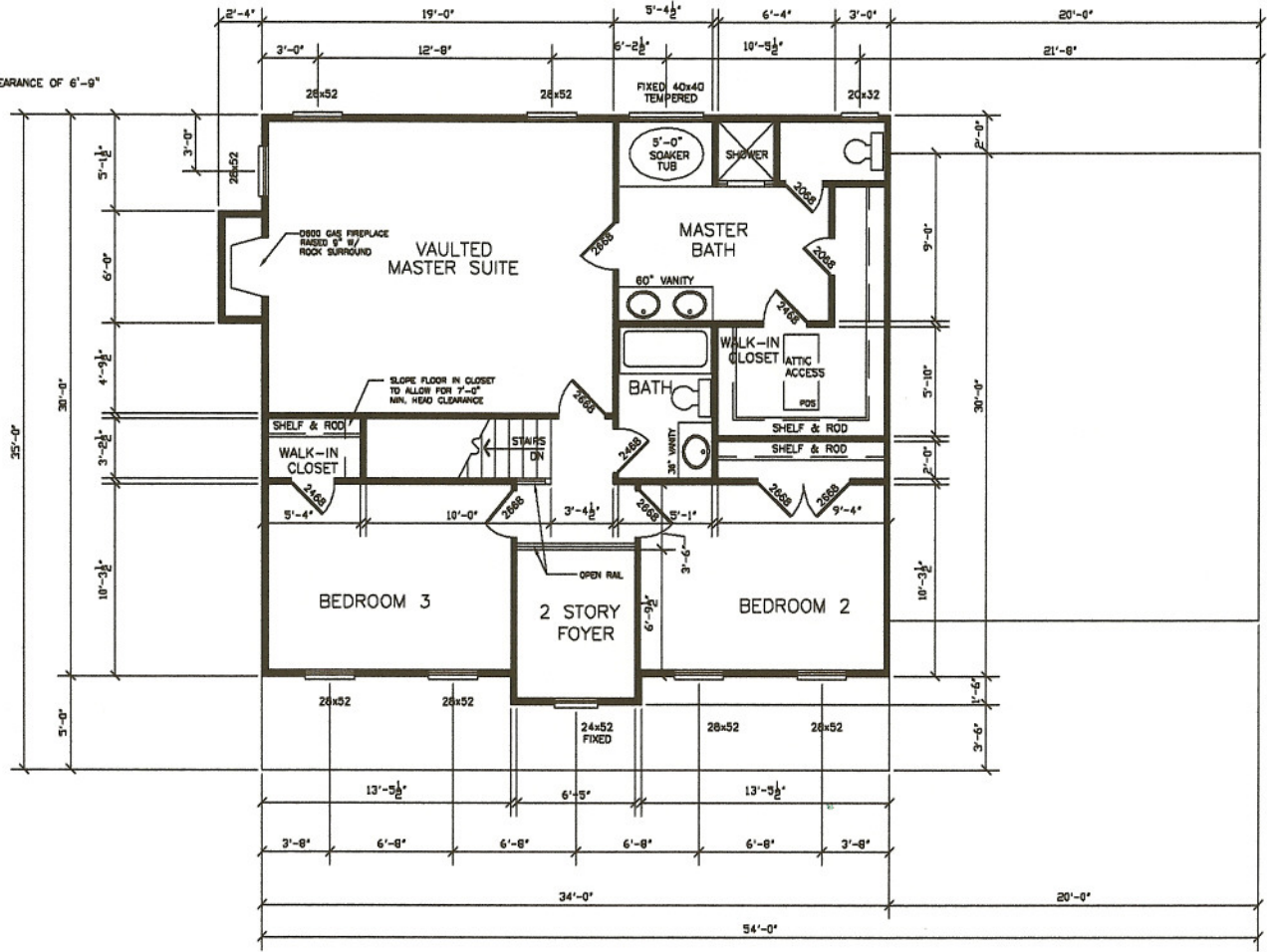
2000SF
 THE TATE
 Lot 23

DATE:
 03/01/05
 SHEET:
 A-1

LIVING LEVEL NOTES:
 HEAT PUMP 200 AMP SERVICE

INSULATION:
 ATTIC R-30
 EXT. WALL R-13
 BASEMENT CEILING R-19
 ATTIC VENTILATION WITH RIDGE
 VENTS AND PERFORATED SOFFIT
 VENT

STAIRS
 TREADS 10 1/2"
 RISER 7 1/2"
 WIDTH 36"
 MAINTAIN HEAD CLEARANCE OF 6'-9"



HOUSE HEIGHT:
 BASEMENT:
 FIRST FLOOR:
 SECOND FLOOR:

SECOND FLOOR PLAN



DESIGNED BY
 FRANK BETZ ASSOCIATES, INC.
 1800 LAKE PARK DRIVE SUITE 101
 SMYRNA, GEORGIA 30080
 404/431-0888

2000SF
 THE TATE
 Lot 23

DATE:
 03/01/05
 SHEET:
 A-2

